

Figure 1 - Floor Stud Hole Pattern

1		2	3/8-16X1.00
	(2x)		(8X) (10X)
3		3/8	3/8
	(8X) (10X)		(8X) (10X)
5		3/8	3/8
	(8X) (10X)		(8X) (10X)

WARNING

To avoid electric shock, do not energize any circuits before all internal and external electrical and mechanical clearances are checked to assure that all assembled equipment functions safely and properly.

INSTALLATION INSTRUCTION:

1. Check the depth of the floor stand ("C" dimension) to verify it matches the enclosure depth dimension.
2. Anchor six 3/8-inch diameter studs (not provided with kit) securely in the floor as shown in Figure 1.
3. Drill the appropriate hole pattern in the bottom of the enclosure as shown in Figure 2.
4. Bolt the floor stand to the enclosure as shown in Figure 3 using the 3/8-16x1.00 hex head screws (Item 2), washers (Items 3 and 4), and nuts (Item 5) provided. Firmly tighten all fasteners.
5. Position the enclosure and attached floor stands over the anchored floor studs, extending the studs through the base holes in the floor stands.
6. Secure the floor stands to the anchored floor studs with 3/8 inch nuts (Item 5) and lockwashers (Items 3 and 4) or with 3/8 inch locknuts and washers (not provided with kit). Torque to 120 in-lbs.

This accessory maintains UL/CSA Type 12, 4, 4X when installed per these instructions.

This accessory is covered by UL file E61997 and CSA file LR42186.

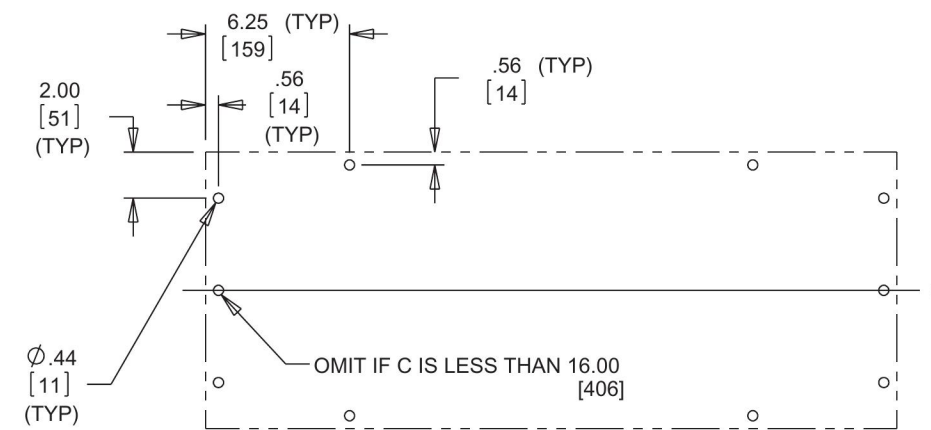


Figure 2 - Enclosure Bottom Hole Pattern

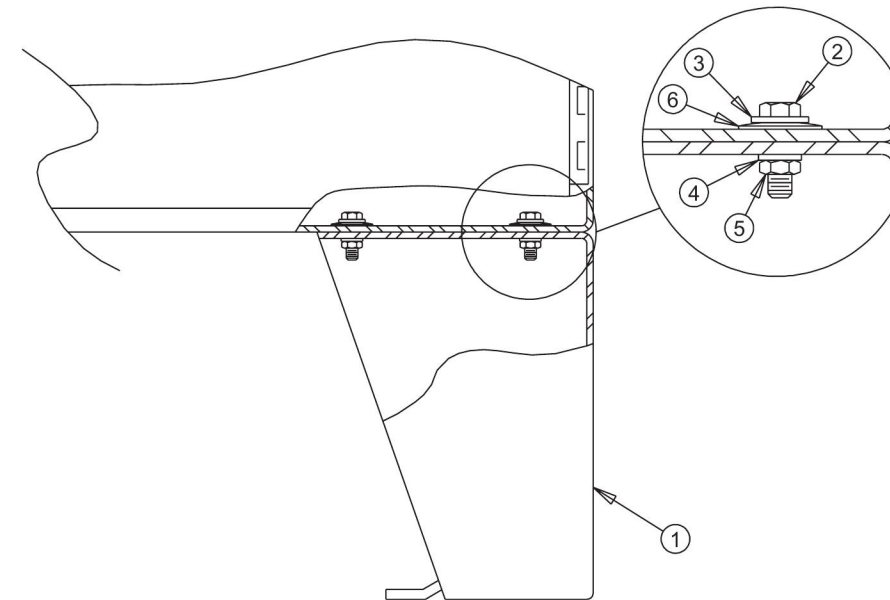


Figure 3

Catalog Number	Dim. C	
AFK0608	8.06	
AFK1208		
AFK1208SS		
AFK1808		
AFK2408		
AFK0610		10.06
AFK1210		
AFL1210SS		
AFK1810		
AFK2410		
AFK2410SS	12.06	
AFK0612		
AFK1212		
AFK1212SS		
AFK1812		
AFK2412		16.06
AFK2412SS		
AFK1216		
AFK1216SS		
AFK1816		
AFK2416	20.06	
AFK1220		
AFK0618		18.06
AFK1218		
AFK1218SS		
AFK1224SS		